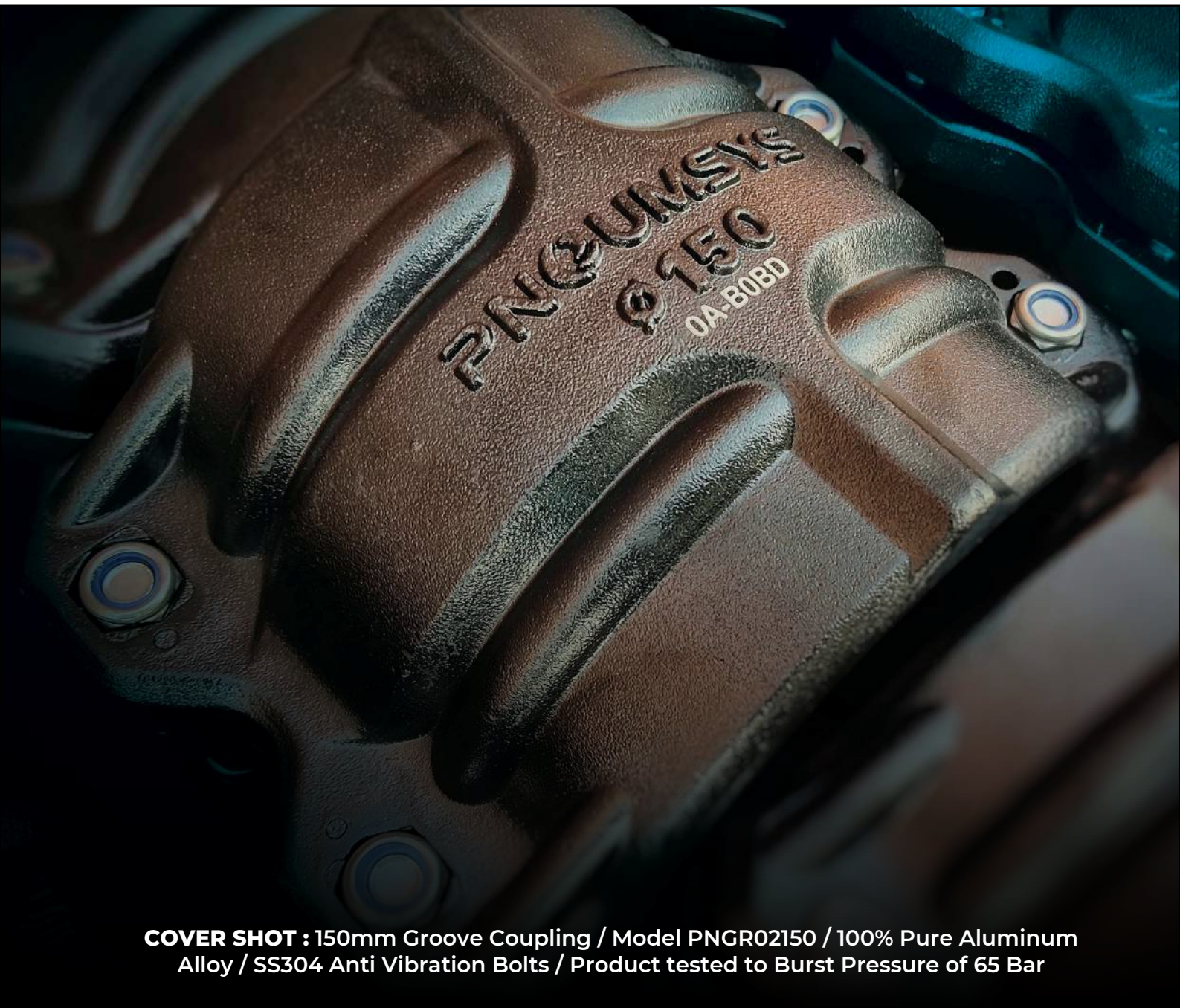


PNQUMSYS[®]

Engineered Toughness



COVER SHOT : 150mm Groove Coupling / Model PNCR02150 / 100% Pure Aluminum Alloy / SS304 Anti Vibration Bolts / Product tested to Burst Pressure of 65 Bar



CONTENT	Pg. no
CERTIFICATES	3
FIELD OF APPLICATION	6
PUSH-FIT RANGE	7
GROOVE-FIT RANGE	14
ACCESSORIES -01	18
STAINLESS STEEL 304 RANGE	22
15MM 168MM SS316 L PRESS FITTINGS	44
4MM-12MM PNEUMATIC PUSH IN FITTINGS	46
15MM-32MM JOHN GUEST COMPRESSED AIR FITTINGS	48
1/4" - 1/2" FOOD GRADE PUSH IN FITTINGS	52
15MM- 28MM FOOD GRADE PEX PLUMBING FITTINGS AND PIPES	53
ACCESSORIES- 02	57
CLIENT LIST	64
CONTACT US	69
CONTACT INFORMATION	70

CERTIFICATES

PRODUCT QUALITY

ISO Certification

PNEUMSYS Connectors manufacturing facilities are certified ISO 9001 version 2015 and operate a Quality Management System in order to ensure the level of quality and service that is expected by our customers.



Qualicoat Certification

All aluminum pipes are coated with a lacquered powder coated finish with a Qualicoat certified coating for additional environmental protection.

PRESSURE VESSEL REQUIREMENTS

ASME B31.1/B31.3 Conformity

PNEUMSYS meets the requirements of ASME B31.1 & B31.3 which stipulates "the minimum requirements for the design, materials, fabrication, erection, test and inspection of power and auxiliary piping systems for industrial institutional plants" as non-boiler external piping".



CE Directive

PNEUMSYS Products conform to the European Pressure Equipment Directive 2014/68/EU. This directive outlines the safety requirements for storage tanks, compressors, and piping



SAFETY STANDARDS

PNEUMSYS meets standards for safety, quality & compliance as specified for process piping.



CERTIFICATE



ENVIRONMENTAL PROTECTION ISO 14001

PNEUMSYS is ISO 14001 certified for our Environmental Management System, which requires a plan to reduce the environmental impact on manufacturing and selling products.

REACH - RoHS

All **PNEUMSYS** products comply with the REACH and RoHS directives which limit the use of hazardous substances.

Recyclable

All **PNEUMSYS** products are 100% recyclable.

MEDIA QUALITY

ISO 232021 Certification
ISO 8573 is the international standard for compressed air quality. **PNEUMSYS** products have been tested to meet the highest air quality standard found within ISO 8573. The air quality is dependent on the treatment performed in the compressor room. **PNEUMSYS** will not introduce additional solid particles, water, moisture, or oil into the media being conveyed.

Oil Free Certificate

PNEUMSYS products will not contaminate the conveyed media with grease or oil particles.

LONG TERM COMMITMENT 10 Year Warranty

PNEUMSYS warrants its products to be free of defects in material and workmanship for 10 years from the date of installation.



PNEUMSYS®, the epitome of efficiency and adaptability serves as an exceptional solution for a multitude of applications, including compressed air, vacuum, inert gas, process water, and chemical transfers.

PNEUMSYS® aluminium pipes come with a mirror finish on the inside thus ensuring laminar flows. The exceptional finish on the inside is a protective coating to ensure no oxidation of the inside of the pipe when exposed to water, oil, or other contaminants so the media flowing through the pipe remains integral in nature. This is in stark contrast to conventional materials such as black iron or copper, which are known to deteriorate over time due to corrosion.

PNEUMSYS® consistently deliver pristine air quality while maintaining peak flow rate performance, in perfect harmony with our commitment to energy efficiency and sustainable product design.

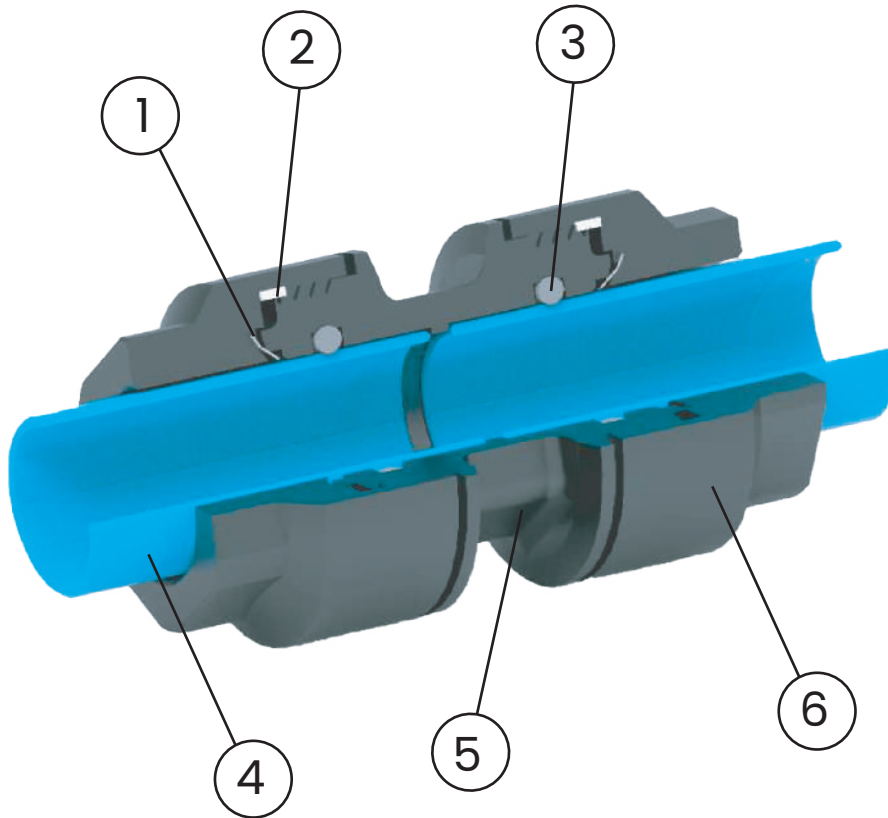




TRANSPORT AND DISTRIBUTION OF COMPRESSED AIR FOR ANY KIND OF USE. SOME TECHNICAL CHARACTERISTICS

SOME TECHNICAL CHARACTERISTICS	
Standard Colour	RAL 5012
Max Working Pressure	16 BARS
Plant Testing Pressure 1 Hour at 20°C	24 BARS
Quality Testing Pressure 1 Hour at 20°C	64 BARS
Production Tested Percentage	100%
O.ring	NBR 65/75 S.A.
Continuous Service Temp. Limit	-20C 'A 100°C
Aluminium Pipe Mechanical	According to EN-755-2/2008
Resistance	Standard
Pipe Material	Aluminium Alloy EN AW 6063- T5 According to EN-755-2/2008. (External Treatment:- Powder Coating Internal Treatment:- Chromadizing)
Pipe Thickness in MM	DN20-S1.0, DN25-S1.1, DN32-S1.2, DN40-S1.3, DN50-S1.5, DN63-S1.8- DN90 -S2.1-DN100-S3.0- DN150-S3.0
Internal treatment	Chromadizing
Fittings Material	Aluminium
Teeth Ring Material	304 Stainless Steel
Threads Standards	ISO 7-1:1994(en)

PUSH-FIT RANGE

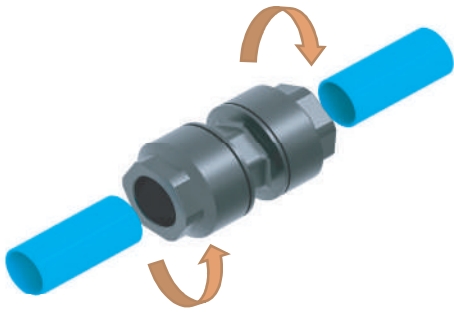


FEATURES:-

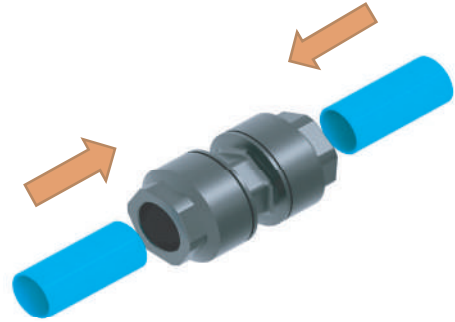
- 1) TEETH RING : SS 304
- 2) LOCKING RING : NYLON
- 3) O RING : NBR
- 4) PIPE : ALUMINUM
- 5) BODY : ALUMINUM
- 6) CAP : ALUMINUM

ASSEMBLY INSTRUCTIONS FOR PUSH-IN FITTING

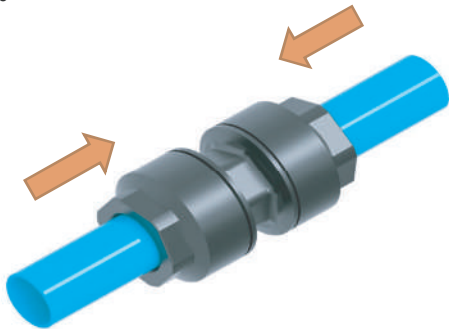
1.



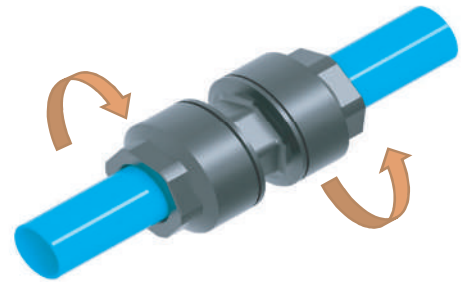
2.



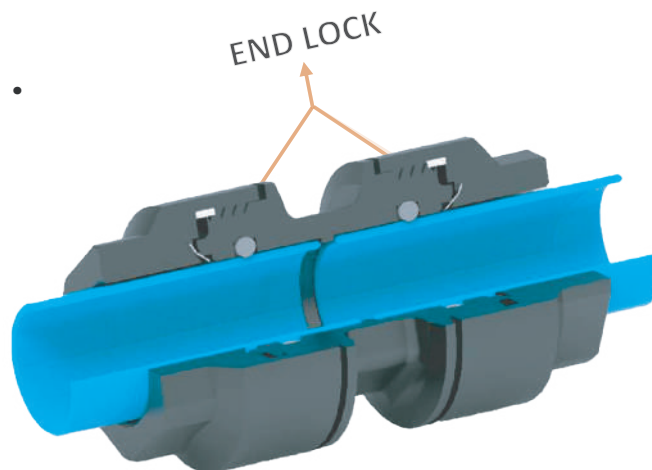
3.



4.



5.



PUSH-FIT RANGE

ALUMINIUM PIPE



PART NO.	SIZE MM/SM (DIA OF PIPE)	LENGTH OF PIPE (METERS)
82.900.020.104	20	4
82.900.025.105	25	5
82.900.040.106	40	5.8
82.900.050.106	50	5.8
82.900.063.106	63	5.8

STRAIGHT CONNECTOR



PART NO.	Ø
PN0220	20
PN0225	25
PN0240	40
PN0250	50
PN0263	63

MALE ADAPTER



PART NO.	Ø	THREAD BSP
PN052012	20	1/2"
PN052034	20	3/4"
PN052512	25	1/2"
PN052534	25	3/4"
PN052501	25	1"
PN0540114	40	1.1/4"
PN0540112	40	1.1/2"
PN0550112	50	1.1/2"
PN055002	50	2"
PN056302	63	2"
PN0563212	63	2.1/2"



FEMALE ADAPTOR



PART NO.	Ø
PN062012	20 X 1/2"
PN062534	25 X 3/4"
PN0640114	40 X 1.1/4"
PN0650112	50 X 1.1/2"
PN066302	63 X 2"

EQUAL ELBOW



PART NO.	Ø
PN0320	20
PN0325	25
PN0340	40
PN0350	50
PN0363	63

MALE THREADED ELBOW



PART NO.	Ø
PN322012	20 X 1/2"
	25 X 3/4"
PN3240112	40 X 1.1/2"
PN350112	50 X 1.1/2"
PN326302	63 X 2"

EQUAL TEE



PART NO.	SIZE (MM)
PN0420	20
PN0425	25
PN0440	40
PN0450	50
PN0463	63

PUSH-FIT RANGE

FEMALE THREADED TEE



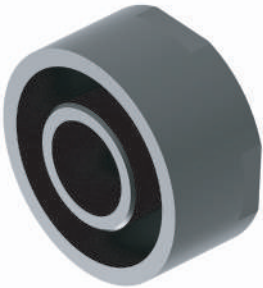
PART NO.	Ø
PN412012	20 X 1/2"
PN412534	25 X 3/4"
PN4140114	40 X 1.1/4"
PN4150112	50 X 1.1/2"
PN416302	63 X 2"

REDUCER



PART NO.	Ø
PNRSC2520	25 X 20
PNRSC4020	40 X 20
PNRSC4025	40 X 25
PNRSC5020	50 X 20
PNRSC5025	50 X 25
PNRSC5040	50 X 40
PNRSC6325	63 X 25
PNRSC6340	63 X 40
PNRSC6350	63 X 50

END CAP



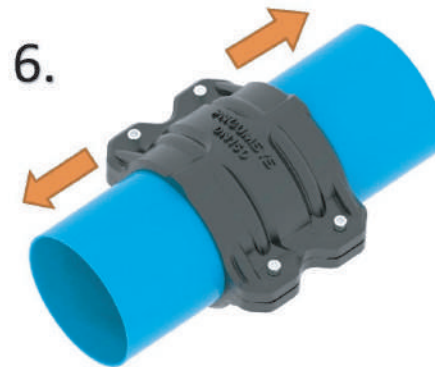
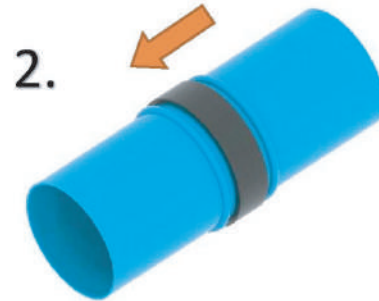
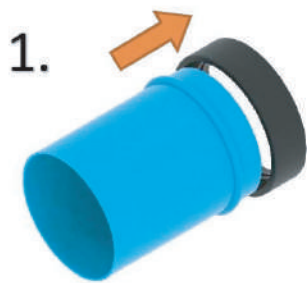
PART NO.	Ø
PN1020	20
PN1025	25
PN1040	40
PN1050	50
PN1063	63

ALUMINIUM PUSH FIT & THREADED MANIFOLD BLOCK



PART NO.	PORT OUTLET
ALPNMB2012	20 X 1/2'-3PURGE
ALPNMB2512	25 X 1/2'-3PURGE
ALPNMB1212	1/2"X1/2"-3PURGE
ALPNMB3412	3/4"X1/2"-3PURGE
ALPNMB1112	1 X 1/2'-3PURGE

ASSEMBLY INSTRUCTIONS FOR GROOVE FITTING



GROOVE FITTING CONNECTION WITH GROOVE CONNECTOR



MALE ADAPTOR + 1 GROOVE COUPLING



END PLUG + 1 GROOVE COUPLING



FEMALE ADAPTOR + 1 GROOVE COUPLING



ELBOW + 2 GROOVE COUPLING



TEE + 3 GROOVE COUPLING



FLANGE ADAPTOR + 1 GROOVE COUPLING



REDUCER + 2 GROOVE COUPLING

GROOVE-FIT RANGE

ALUMINIUM PIPES



PART NO.	Ø	OD (MM)
PG-82.900.040.106	40	5.8 mt.
PG-82.900.050.106	50	5.8 mt.
PG-82.900.063.106	63	5.8 mt.
PG-82.900.090.106	90	5.8 mt.
PG-82.900.100.106	100	5.8 mt.
PG-82.900.150.106	150	5.8 mt.
PG-82.900.200.106	200	5.8 mt.

NOTE : For Pipes required with Grooved ends to be used with Grooved Couplings, the above model nos to be used with "-G" added as a suffix at the end of the model number.

GROOVE COUPLING



PART NO.	Ø	NP
PNGR0240	40	16 BARS
PNGR0250	50	16 BARS
PNGR0263	63	16 BARS
PNGR0290	90	16 BARS
PNGR02100	100	16 BARS
PNGR02150	150	16 BARS
PNGR02200	200	16 BARS

MALE ADAPTOR



PART NO.	Ø
PNGRM40112	40 X 1.1/2"
PNGRM50112	50 X 1.1/2"
PNGRM5002	50 X 2"
PNGRM6302	63 X 2"
PNGRM63212	63 X 2.1/2"
PNGRM9003	90 X 3"
PNGRM1002	100 X 2"
PNGRM1003	100 X 3"

GROOVE-FIT RANGE

FEMALE ADAPTOR



PART NO.	Ø
PNGRF40112	40 X 1.1/2"
PNGRF50112	50 X 1.1/2"
PNGRF5002	50 X 2"
PNGRF6302	63 X 2"
PNGRF63212	63 X 2.1/2"
PNGRF90112	90 X 1.1/2"
PNGRF9003	90 X 3"
PNGRF1002	100 X 2"
PNGRF1003	100 X 3"

FLANGE ADAPTOR



PART NO.	Ø
PNGR0550	50 X 50
PNGR0563	63 X 63
PNGR0590	90 X 90
PNGR05100	100 X 100
PNGR05150	150 X 150
PNGR05200	200 X 200

EQUAL ELBOW



PART NO.	Ø
PNGR0340	40
PNGR0350	50
PNGR0363	63
PNGR0390	90
PNGR03100	100
PNGR03150	150
PNGR03200	200

GROOVE-FIT RANGE



EQUAL TEE

PART NO.	Ø
PNGR0440	40
PNGR0450	50
PNGR0463	63
PNGR0490	90
PNGR04100	100
PNGR04150	150
PNGR04200	200



FEMALE THREADED TEE

PART NO.	Ø
PNFRT50112	50 X 1.1/2"
PNFRT63112	63 X 1.1/2"
PNFRT90212	90 X 2.1/2"
PNFRT15033	150 X 3"



REDUCING TEE

PART NO.	Ø
PNRT6350	65 X 50
PNRT9050	90 X 50
PNRT9063	90 X 63
PNRT150100	150 X 100

GROOVE-FIT RANGE

REDUCING STRAIGHT CONNECTOR



PART NO.	Ø
PNGRPR5020	50 X 20
PNGRPR5025	50 X 25
PNGRPR5040	50 X 40
PNGRPR6325	63 X 25
PNGRPR6340	63 X 40
PNGRR6350	63 X 50
PNGRR9050	90 X 50

PART NO.	Ø
PNGRR9063	90 X 63
PNGRR10050	100 X 50
PNGRR10063	100 X 63
PNGRR10090	100 X 90
PNGRR150100	150 X 100
PNGRR200100	200 X 100

END CAP



PART NO.	Ø
PNGRI040	40
PNGRI050	50
PNGRI063	63
PNGRI090	90
PNGRI0100	100
PNGRI0150	150
PNGRI0200	200

SADDLE BRANCH



PART NO.	Ø
PNSB2212	22 X 1/2"
PNSB2512	25 X 1/2"
PNSB2812	28 X 1/2"
PNSB3212	32 X 1/2"
PNSB4012	40 X 1/2"
PNSB4034	40 X 3/4"
PNSB5012	50 X 1/2"
PNSB5034	50 X 3/4"
PNSB5001	50 X 1"
PNSB6312	63 X 1/2"
PNSB6334	63 X 3/4"
PNSB6301	63 X 1"
PNSB7501	75 X 1"

PART NO.	Ø
PNSB7502	75 X 2"
PNSB9001	90 X 1"
PNSB9002	90 X 2"
PNSB10001	100 X 1"
PNSB10002	100 X 2"
PNSB11001	110 X 1"
PNSB11002	110 X 2"
PNSB15001	150 X 1"
PNSB15002	150 X 2"
PNSB15003	150 X 3"
PNSB16001	160 X 1"
PNSB16002	160 X 2"

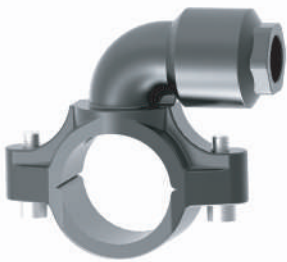


QUICK DROP



PART NO.	Ø
PNQD2520	25 X 20
PNQD3220	32 X 20
PNQD4020	40 X 20
PNQD4025	40 X 25
PNQD5020	50 X 20
PNQD5025	50 X 25
PNQD5032	50 X 32
PNQD6320	63 X 20
PNQD6325	63 X 25
PNQD6332	63 X 32
PNQD9020	90 X 20
PNQD9025	90 X 25
PNQD10020	100 X 20
PNQD10025	100 X 25

SADDLE WITH ELBOW OUTLET



PART NO.	Ø
PNSE2520	25 X 20
PNSE3220	32 X 20
PNSE4020	40 X 20
PNSE4025	40 X 25
PNSE5020	50 X 20
PNSE5025	50 X 25
PNSE5032	50 X 32
PNSE6320	63 X 20
PNSE6325	63 X 25
PNSE6332	63 X 32
PNSE9020	90 X 20
PNSE9025	90 X 25
PNSE10032	100 X 32
PNSE10020	100 X 20
PNSE10025	100 X 25



INLINE BALL VALVE

PART NO.	Ø
PNBV2020	20
PNBV2525	25
PNBV4040	40
PNBV5050	50



BRASS F/F BALL VALVE

PART NO.	SIZE
PNBV15	15-1/2"
PNBV20	20-3/4*
PNBV25	25-1"
PNBV32	32-1.1/4"
PNBV40	40-1.1/2"
PNBV50	50-2"
PNBV63	63-2.1/2"
PNBV80	80 - 3"
PNBV100	100-4"



BRASS M/F BALL VALVE

PART NO.	SIZE
PNMFBV12	1/2"
PNMFBV34	3/4"
PNMFBV01	1"
PNMFBV114	1.1/4"
PNMFBV112	1.1/2"
PNMFBV02	2"
PNMFBV212	2.1/2"



RUBBER LINED CLAMP - WALL FIXING



PART NO.	SIZE (IN MM)
PNRLC20	20
PNRLC25	25
PNRLC32	32
PNRLC40	40
PNRLC50	50
PNRLC63	63
PNRLC75	75
PNRLC90	90
PNRLC100	100
PNRLC110	110
PNRLC150	150
PNRLC160	160

RUBBER LINED CLAMP - WITHOUT WALL FIXING



PART NO.	SIZE (IN MM)
PNRLC20W	20
PNRLC25W	25
PNRLC32W	32
PNRLC40W	40
PNRLC50W	50
PNRLC63W	63
PNRLC90W	90
PNRLC100W	100
PNRLC150W	150



BUTTERFLY VALVE

PART NO.	Ø
PNBFV63	2.1/2"
PNBFV80	3"
PNBFV100	4"
PNBFV150	6"
PNBFV200	8"



AUDCO BALL VALVE (CS BODY)

PART NO.	PORT OUTLET
PNAUD15	15-1/2"
PNAUD20	20-3/4"
PNAUD25	25-1"
PNAUD32	32-1.1/4"
PNAUD40	40-1.1/2"
PNAUD50	50-2"



U - BEND PIPE

PART NO.	Ø
20UBEND	20
25UBEND	25
40UBEND	40



S - BEND PIPE

PART NO.	Ø
20SBEND	20
25SBEND	25
40SBEND	40

15MM - 300MM SS304 PRESS & GROOVE FITTINGS



TECHNICAL PARAMETERS

Industrial compressed air, water supply, hospital, school, hotel, electronics, food & beverage, medical treatment & pharmaceutical factory, fire fighting piping system.

MATERIAL

SS304 OR SS316L

NOMINAL PRESSURES

16BAR/232PSI

WORKING TEMPERATURE

-20°C To 100°C

APPLICABLE FLUIDS

COMPRESSED AIR, WATER,

COOLING/CHILLED WATER,




SOLAR WATER, FUEL & OIL,

GASES ETC.



SEALING TECHNOLOGIES

Pneumsys embeded sealing rings, with superior reliability and longevity, different options for compressed air, water, vacuum, nitrogen and other Inert gases, saturated steam, fuel & Oil heating pump, cooling & chilled Water, solar water, fire water system etc.

Sealing Code	Description	Color	Working Temperature	Main Application Fluids
EPDM	Ethylene Propylene Diene Mnomer		-20°C To 100°C -4°F To 212 °f	Cooling/chilled Water; Low Pressure Steam; Compressed Air; Fire Water System; Hydronic Heating; Waste Water.
NBR	Nitrile Butadiene Rubber		-20°C to 100°C -4°F to 212°F	Hydrualic Oil, Inert Gases, Compressed Air, Lubricants.
FKM	Viton Fluoroelastomer		-20°C to 200°C -4°F to 392°F	High Temp. Steam & Gas, Solar, Heating, Compressed Air, Acid Solutions, Chemicals, Inert Gases.

STAINLESS STEEL RANGE



PIPES



PART NO		OD (MM)	THICKNESS (mm)	LENGTH (mm)
SSPNP01015	15	16.00	1.00	5800.00
SSPNP01020	20	20.00	1.00	5800.00
SSPNP01025	25	25.40	1.20	5800.00
SSPNP01032	32	32.00	1.20	5800.00
SSPNP01040	40	40.00	1.50	5800.00
SSPNP01050	50	50.80	1.50	5800.00
SSPNP01060	60	63.50	1.50	5800.00
SSPNP01065	65	76.10	1.50	5800.00
SSPNP01080	80	89.00	2.00	5800.00
SSPNP010100	100	101.60	2.00	5800.00
SSPNP010125	125	133.00	2.50	5800.00
SSPNP010150	150	159.00	2.50	5800.00
SSPNP010200	200	219.00	3.00	5800.00
SSPNP010250	250	273.00	4.00	5800.00
SSPNP010300	300	325.00	4.00	5800.00

CONNECTOR



PART NO	
S1500 00	DN15
S2000 00	DN20
S2500 00	DN25
S3200 00	DN32
S4000 00	DN40
S5000 00	DN50
S6000 00	DN60
S6500 00	DN65
S8000 00	DN80
S1000 00	DN100

STAINLESS STEEL RANGE



END CAP



PART NO.	DN
C1500 00	DN15
C2000 00	DN20
C2500 00	DN25
C3200 00	DN32
C4000 00	DN40
C5000 00	DN50
C6000 00	DN60
C6500 00	DN65
C8000 00	DN80
C1B00 00	DN100

ADJUSTABLE CONNECTOR



PART NO.	DN
S1500 0K	DN15
S2000 0K	DN20
S2500 0K	DN25
S3200 0K	DN32
S4000 0K	DN40
S5000 0K	DN50
S6000 0K	DN60
S6500 0K	DN65
S8000 0K	DN80
S1B00 0K	DN100

A-90° ELBOW



PART NO.	DN
E1500 00	DN15
E2000 00	DN20
E2500 00	DN25
E3200 00	DN32
E4000 00	DN40
E5000 00	DN50
E6000 00	DN60
E6500 00	DN65
E8000 00	DN80
E1B00 00	DN100



REDUCING CONNECTOR



PART NO.	DN
R2015 00	20 X 15
R2515 00	25 X 15
R2520 00	25 X 20
R3215 00	32 X 15
R3220 00	32 X 20
R3225 00	32 X 25
R4015 00	40 X 15
R4020 00	40 X 20
R4025 00	40 X 25
R4032 00	40 X 32
R5015 00	50 X 15
R5020 00	50 X 20
R5025 00	50 X 25
R5032 00	50 X 32
R5040 00	50 X 40
R6032 00	60 X 32
R6040 00	60 X 40
R6050 00	60 X 50
R6532 00	65 X 32
R6540 00	65 X 40
R6550 00	65 X 50
R6560 00	65 X 60
R8032 00	80 X 32
R8040 00	80 X 40
R8050 00	80 X 50
R8060 00	80 X 60
R8065 00	80 X 65
RIB32 00	100 X 32
RIB40 00	100 X 40
RIB50 00	100 X 50
RIB60 00	100 X 60
RIB65 00	100 X 65
RIB80 00	100 X 80

STAINLESS STEEL RANGE

B -90° ELBOW



PART NO.	
E1500 0B	DN15
E2000 0B	DN20
E2500 0B	DN25
E3200 0B	DN32
E4000 0B	DN40
E5000 0B	DN50
E6000 0B	DN60
E6500 0B	DN65
E8000 0B	DN80
E1B00 0B	DN100

A-45° ELBOW



PART NO.	
E1500 45	DN15
E2000 45	DN20
E2500 45	DN25
E3200 45	DN32
E4000 45	DN40
E5000 45	DN50
E6000 45	DN60
E6500 45	DN65
E8000 45	DN80
E1B00 45	DN100

B -45° ELBOW



PART NO.	
E1500 4B	DN15
E2000 4B	DN20
E2500 4B	DN25
E3200 4B	DN32
E4000 4B	DN40
E5000 4B	DN50
E6000 4B	DN60
E6500 4B	DN65
E8000 4B	DN80
E1B00 4B	DN100

STAINLESS STEEL RANGE



EQUAL TEE



PART NO.	
T1500 00	DN15
T2000 00	DN20
T2500 00	DN25
T3200 00	DN32
T4000 00	DN40
T5000 00	DN50
T6000 00	DN60
T6500 00	DN65
T8000 00	DN80
T1B00 00	DN100

MALE ADAPTER



PART NO.	DN
M1515 00	15 X 1/2"
M2015 00	20 X 1/2"
M2020 00	20 X 3/4"
M2515 00	25 X 1/2"
M2520 00	25 X 3/4"
M2525 00	25 X 1"
M3225 00	32 X 1"
M3232 00	32 X 1.1/4"
M4032 00	40 X 1.1/4"
M4040 00	40 X 1.1/2"
M5040 00	50 X 1.1/2"
M5050 00	50 X 2"
M6065 00	60 X 2.1/2"
M6565 00	65 X 2.1/2"
M8080 00	80 X 3"
M1B1B 00	100 X 4"

STAINLESS STEEL RANGE

REDUCING TEE



PART NO.	DN
T2015 OR	20 X 15
T2515 OR	25 X 15
T2520 OR	25 X 20
T3215 OR	32 X 15
T3220 OR	32 X 20
T3225 OR	32 X 25
T4015 OR	40 X 15
T4020 OR	40 X 20
T4025 OR	40 X 25
T4032 OR	40 X 32
T5015 OR	50 X 15
T5020 OR	50 X 20
T5025 OR	50 X 25
T5032 OR	50 X 32
T5040 OR	50 X 40
T6020 OR	60 X 20
T6025 OR	60 X 25
T6032 OR	60 X 32
T6040 OR	60 X 40
T6050 OR	60 X 50
T6520 OR	65 X 20
T6525 OR	65 X 25
T6532 OR	65 X 32
T6540 OR	65 X 40
T6550 OR	65 X 50
T6560 OR	65 X 60
T8020 OR	80 X 20
T8025 OR	80 X 25
T8032 OR	80 X 32
T8040 OR	80 X 40
T8050 OR	80 X 50
T8060 OR	80 X 60
T8065 OR	80 X 65
T1B20 OR	100 X 20
T1B25 OR	100 X 25
T1B32 OR	100 X 32
T1B40 OR	100 X 40
T1B50 OR	100 X 50
T1B60 OR	100 X 60
T1B65 OR	100 X 65
T1B80 OR	100 X 80

STAINLESS STEEL RANGE



FEMALE ADAPTOR



PART NO.	DN
F1515 00	15 X 1/2"
F2015 00	20 X 1/2"
F2020 00	20 X 3/4"
F2515 00	25 X 1/2"
F2520 00	25 X 3/4"
F2525 00	25 X 1"
F3225 00	32 X 1"
F3232 00	32 X 1.1/4"
F4032 00	40 X 1.1/4"
F4040 00	40 X 1.1/2"
F5040 00	50 X 1.1/2"
F5050 00	50 X 2"
F6065 00	60 X 2.1/2"
F6565 00	65 X 2.1/2"
F8080 00	80 X 3"
F1B1B 00	100 X 4"

STAINLESS STEEL RANGE

MALE TEE



PART NO.	
T1515 0M	
T2015 0M	
T2020 0M	
T2515 0M	
T2520 0M	
T2525 0M	
T3215 0M	
T3220 0M	
T3225 0M	
T3232 0M	
T4015 0M	
T4020 0M	

PART NO.	
T4025 0M	
T4032 0M	
T4040 0M	
T5015 0M	
T5020 0M	
T5025 0M	
T5032 0M	
T5040 0M	
T5050 0M	

FEMALE TEE



PART NO.	DN
T1515 0F	15 X 1/2"
T2015 0F	20 X 1/2"
T2020 0F	20 X 3/4"
T2515 0F	25 X 1/2"
T2520 0F	25 X 3/4"
T2525 0F	25 X 1"
T3215 0F	32 X 1/2"
T3220 0F	32 X 3/4"
T3225 0F	32 X 1"
T3232 0F	32 X 1.1/4"
T4015 0F	40 X 1/2"
T4020 0F	40 X 3/4"
T4025 0F	40 X 1"
T4032 0F	40 X 1.1/4"
T4040 0F	40 X 1.1/2"
T5015 0F	50 X 1/2"
T5020 0F	50 X 3/4"
T5025 0F	50 X 1"
T5032 0F	50 X 1.1/4"
T5040 0F	50 X 1.1/2"
T5050 0F	50 X 2"

PART NO.	DN
T6050 0F	60 X 2"
T6550 0F	65 X 2"
T8050 0F	80 X 2"
T1B50 0F	100 X 2"

STAINLESS STEEL RANGE



SWIVEL FEMALE ADAPTOR



PART NO.	DN
F1515 OK	15 X 1/2"
F1520 OK	15 X 3/4"
F2015 OK	20 X 1/2"
F2020 OK	20 X 3/4"
F2525 OK	25 X 1"
F3232 OK	32 X 1.1/4"
F4040 OK	40 X 1.1/2"
F5050 OK	50 X 2"

MALE 90° ELBOW



PART NO.	DN
E1515 0M	15 X 1/2"
E2015 0M	20 X 1/2"
E2020 0M	20 X 3/4"
E2515 0M	25 X 1/2"
E2520 0M	25 X 3/4"
E2525 0M	25 X 1"
E3225 0M	32 X 1"
E3232 0M	32 X 1.1/4"
E4032 0M	40 X 1.1/4"
E4040 0M	40 X 1.1/2"
E5040 0M	50 X 1.1/2"
E5050 0M	50 X 2"

FEMALE SHORT 90° ELBOW



PART NO.	DN
E1515 2F	15 X 1/2"
E2015 2F	20 X 1/2"
E2020 2F	20 X 3/4"
E2525 2F	

STAINLESS STEEL RANGE



FLANGE



PART NO.	
L2500 00	DN25
L3200 00	DN32
L4000 00	DN40
L5000 00	DN50
L6000 00	DN60
L6500 00	DN65
L8000 00	DN80
LIB00 00	DN100

FEMALE LONG 90° ELBOW



PART NO.	
E1515 0F	15 X 1/2"
E2015 0F	20 X 1/2"
E2020 0F	20 X 3/4"
E2515 0F	25 X 1/2"
E2520 0F	25 X 3/4"
E2525 0F	25 X 1"
E3225 0F	32 X 1"
E3232 0F	32 X 1.1/4"
E4032 0F	40 X 1.1/4"
E4040 0F	40 X 1.1/2"
E5040 0F	50 X 1.1/2"
E5050 0F	50 X 2"

STAINLESS STEEL RANGE



GROOVED 45° ELBOW



PART NO.	
EIE00 45	DN125
EIW00 45	DN150
E2B00 45	DN200
E2W00 45	DN250
E3B00 45	DN300

GROOVED EQUAL TEE



PART NO.	
TIE00 00	DN125
TIW00 00	DN150
T2B00 00	DN200
T2W00 00	DN250
T3B00 00	DN300

GROOVED REDUCING TEE



PART NO.	DN
TIWIE OR	150 X 125
T2BIE OR	200 X 125
T2B1W OR	200 X 150
T2WIE OR	250 X 125
T2W1W OR	250 X 150
T2W2B OR	250 X 200
T3BIE OR	300 X 125
T3B1W OR	300 X 150
T3B2B OR	300 X 200
T3B2W OR	300 X 250

STAINLESS STEEL RANGE



GROOVED & PRESS REDUCING CONNECTOR



PART NO.	DN
RIE50 00	125 X 50
RIE65 00	125 X 65
RIE80 00	125 X 80
RIE1B 00	125 X 100
RIW50 00	150 X 50
RIW65 00	150 X 65
RIW80 00	150 X 80
RIW1B 00	150 X 100
R2B50 00	200 X 50
R2B65 00	200 X 65
R2B80 00	200 X 80
R2B1B 00	200 X 100
R2W50 00	250 X 50
R2W65 00	250 X 65
R2W80 00	250 X 80
R2W1B 00	250 X 100
R3B50 00	300 X 50
R3B65 00	300 X 65
R3B80 00	300 X 80
R3B1B 00	300 X 100

GROOVED 90° ELBOW



PART NO.	
E1E00 00	DN125
E1W00 00	DN150
E2B00 00	DN200
E2W00 00	DN250
E3B00 00	DN300

STAINLESS STEEL RANGE

GROOVED & PRESSED REDUCING TEE



PART NO.	DN
T1E50 OR	125 X 50
T1E65 OR	125 X 65
T1E80 OR	125 X 80
T1E1B OR	125 X 100
T1W50 OR	150 X 50
T1W65 OR	150 X 65
T1W80 OR	150 X 80
T1W1B OR	150 X 100
T2B50 OR	200 X 50
T2B65 OR	200 X 65
T2B80 OR	200 X 80
T2B1B OR	200 X 100
T2W50 OR	250 X 50
T2W65 OR	250 X 65
T2W80 OR	250 X 80
T2W1B OR	250 X 100
T3B50 OR	300 X 50
T3B65 OR	300 X 65
T3B80 OR	300 X 80
T3B1B OR	300 X 100

GROOVED REDUCING CONNECTOR



PART NO.	DN
R1W1E 00	150 X 125
R2B1E 00	200 X 125
R2B1W 00	200 X 150
R2W1E 00	250 X 125
R2W1W 00	250 X 150
R2W2B 00	250 X 200
R3B1E 00	300 X 125
R3B1W 00	300 X 150
R3B2B 00	300 X 200
R3B2W 00	300 X 250

STAINLESS STEEL RANGE

GROOVED FLANGE



PART NO.	DN
L1E00 00	DN125
L1W00 00	DN150
L2B00 00	DN200
L2W00 00	DN250
L3B00 00	DN300

GROOVED END CUP



PART NO.	DN
C1E00 00	DN125
C1W00 00	DN150
C2B00 00	DN200
C2W00 00	DN250
C3B00 00	DN300

FEMALE BALL VALVE



PART NO.	DN
V1500 0F	DN15
V2000 0F	DN20
V2500 0F	DN25
V3200 0F	DN32
V4000 0F	DN40
V5000 0F	DN50
V6500 0F	DN65
V8000 0F	DN80
V1B00 0F	DN100

GROOVED CONNECTOR



PART NO.	DN
S1E00 00	DN125
S1W00 00	DN150
S2B00 00	DN200
S2W00 00	DN250
S3B00 00	DN300

STAINLESS STEEL RANGE

O-CLAMP



PART NO.	DN
O1500 00	DN15
O2000 00	DN20
O2500 00	DN25
O3200 00	DN32
O4000 00	DN40
O5000 00	DN50
O6000 00	DN60
O6500 00	DN65
O8000 00	DN80
O1B00 00	DN100

U-CLAMP



PART NO.	DN
U1500 00	DN15
U2000 00	DN20
U2500 00	DN25
U3200 00	DN32
U4000 00	DN40
U5000 00	DN50
U6000 00	DN60
U6500 00	DN65
U8000 00	DN80
U1B00 00	DN100
U1E00 00	DN125
U1W00 00	DN150
U2B00 00	DN200
U2W00 00	DN250
U3B00 00	DN300

FEMALE GATE VALVE



PART NO.	DN
V1500 ZF	DN15
V2000 ZF	DN20
V2500 ZF	DN25
V3200 ZF	DN32
V4000 ZF	DN40
V5000 ZF	DN50
V6500 ZF	DN65
V8000 ZF	DN80
V1B00 ZF	DN100

STAINLESS STEEL RANGE

FEMALE GLOBE VALVE



PART NO.	DN
V1500 JF	DN15
V2000 JF	DN20
V2500 JF	DN25
V3200 JF	DN32
V4000 JF	DN40
V5000 JF	DN50
V6500 JF	DN65
V8000 JF	DN80
V1B00 JF	DN100

FLANGE GLOBE VALVE



PART NO.	DN
V1500 JL	DN15
V2000 JL	DN20
V2500 JL	DN25
V3200 JL	DN32
V4000 JL	DN40
V5000 JL	DN50
V6500 JL	DN65

PART NO.	DN
V8000 JL	DN80
V1B00 JL	DN100
V1E00 JL	DN125
V1W00 JL	DN150
V2B00 JL	DN200
V2W00 JL	DN250
V3B00 JL	DN300

FLANGE GATE VALVE



PART NO.	DN
V1500 ZL	DN15
V2000 ZL	DN20
V2500 ZL	DN25
V3200 ZL	DN32
V4000 ZL	DN40
V5000 ZL	DN50
V6500 ZL	DN65
V8000 ZL	DN80
V1B00 ZL	DN100
V1E00 ZL	DN125
V1W00 ZL	DN150
V2B00 ZL	DN200
V2W00 ZL	DN250
V3B00 ZL	DN300

STAINLESS STEEL RANGE

O-CLAMP



PART NO.	DN
O1500 00	DN15
O2000 00	DN20
O2500 00	DN25
O3200 00	DN32
O4000 00	DN40
O5000 00	DN50
O6000 00	DN60
O6500 00	DN65
O8000 00	DN80
O1B00 00	DN100

U-CLAMP



PART NO.	DN
U1500 00	DN15
U2000 00	DN20
U2500 00	DN25
U3200 00	DN32
U4000 00	DN40
U5000 00	DN50
U6000 00	DN60
U6500 00	DN65
U8000 00	DN80
U1B00 00	DN100
U1E00 00	DN125
U1W00 00	DN150
U2B00 00	DN200
U2W00 00	DN250
U3B00 00	DN300

FEMALE GATE VALVE



PART NO.	DN
V1500 ZF	DN15
V2000 ZF	DN20
V2500 ZF	DN25
V3200 ZF	DN32
V4000 ZF	DN40
V5000 ZF	DN50
V6500 ZF	DN65
V8000 ZF	DN80
V1B00 ZF	DN100

STAINLESS STEEL RANGE

FEMALE GLOBE VALVE



PART NO.	DN
V1500 JF	DN15
V2000 JF	DN20
V2500 JF	DN25
V3200 JF	DN32
V4000 JF	DN40
V5000 JF	DN50
V6500 JF	DN65
V8000 JF	DN80
V1B00 JF	DN100

FLANGE GLOBE VALVE



PART NO.	DN
V1500 JL	DN15
V2000 JL	DN20
V2500 JL	DN25
V3200 JL	DN32
V4000 JL	DN40
V5000 JL	DN50
V6500 JL	DN65

PART NO.	DN
V8000 JL	DN80
V1B00 JL	DN100
V1E00 JL	DN125
V1W00 JL	DN150
V2B00 JL	DN200
V2W00 JL	DN250
V3B00 JL	DN300

FLANGE GATE VALVE



PART NO.	DN
V1500 ZL	DN15
V2000 ZL	DN20
V2500 ZL	DN25
V3200 ZL	DN32
V4000 ZL	DN40
V5000 ZL	DN50
V6500 ZL	DN65
V8000 ZL	DN80
V1B00 ZL	DN100
V1E00 ZL	DN125
V1W00 ZL	DN150
V2B00 ZL	DN200
V2W00 ZL	DN250
V3B00 ZL	DN300

STAINLESS STEEL RANGE



ANGLE SEAT VALVE FEMALE



PART NO.	θ	ACTUATOR DIA(MM)	D	R	P	G	H	L	L1	T
V1500 AF	DN15	50	62	33.5	ZG1/8"	ZG 1/2"	126	137	68	13
V2000 AF	DN20	50	62	33.5	ZG1/8"	ZG 3/4"	138	144	75	16
V2500 AF	DN25	50	62	33.5	ZG1/8"	ZC1"	148	156	90	16
V3200 AF	DN32	63	76	42	ZG1/8"	ZG1 1/4"	182	188	110	21
V4000 AF	DN40	63	76	42	ZG1/8"	ZG1 1/2"	182	190	116	21
V5000 AF	DN50	63	76	42	ZG1/8"	ZG 2"	195	205	136	22
V6500 AF	DN65	80	96	52	ZG1/8"	ZG2 1/2"	280	252	185	30
V8000 AF	DN80	100	114	63	ZG1/8"	ZG 3"	320	280	220	33
V1B00 AF	DN100	100	114	63	ZG1/8"	ZG 4"	350	300	235	35

ANGLE SEAT VALVE FLANGE



PART NO.	θ	ACTUATOR DIA(MM)	L	T	F	D	C	B	A	H
V1500 AL	DN15	50	120	14	2	95	65	40	185	145
V2000 AL	DN20	50	130	14	2	105	75	50	188	155
V2500 AL	DN25	50	140	14A16	2	115	85	60	208	165
V3200 AL	DN32	63	150	16	2	135	100	70	225	195
V4000 AL	DN40	63	180	16	2	145	110	80	240	205
V5000 AL	DN50	63	195	16	2	160	125	92	265	228
V6500 AL	DN65	80	230	18	2	185	145	115	290	264
V8000 AL	DN80	100	250	18	2	195	160	130	330	300
V1B00 AL	DN100	100	295	18	2	215	180	150	350	320

STAINLESS STEEL RANGE

PRESS TOOL



PART NO.	DESCRIPTION.	θ
SSPNPT1550	Full tool set includes 6 jaws	DN15-DN50
	+1 jaw clamber +1 portable gun	
	+2 batteries +1 charger	



PART NO.	DESCRIPTION.	θ
SSPNPT0100	Portable rechargeable	N60-DN100
	Tr hydraulic press tool	
	Includes 4 jaws	
	+1 charger +2 batteries	
	+1 oil cylinder sealing ring	
	+1 safety valve sealing ring	

PIPE CUTTER



PART NO.	DESCRIPTION.	θ
SSPNMCN1550	Manual pipe cutter Incl 6 blades (e stsanle y)	DN15-DN50



PART NO.	DESCRIPTION.	θ
SSPNMC50100	Manual pipe cutter (ridgid)	DN50-DN110

BLADE



PART NO.	DESCRIPTION.	θ
SSPNMC501B-B	Ridgid blade (for mc501lb)	FOR SS ONLY

PART NO.	DESCRIPTION.	θ
SSPNEC151B-B	Ridgid blade (for eci51b)	FOR SS ONLY

STAINLESS STEEL RANGE



ELECTRIC PIPE CUTTER



PART NO.	DESCRIPTION.	M-TI6MM
SSPNEC1151B	Electric pipe cutter Includes 1 blade (ridgid)	

PIPE CUTTER



PART NO.	DESCRIPTION.	Ø
SSPNEC754B	Electric pipe cutter	75MM-400MM
	For dn75-dn400	
	Includes Isaw blade	

SAW BLADE



PART NO.	DESCRIPTION.	Ø
SSPNEC754B-B	Saw blade for ec754b	FOR SS ONLY

GROOVING MACHINE



PART NO.	DESCRIPTION.	Ø
SSPNGM1252B	Grooving machine	DN125-DN200
	For dn125-dn300 pipe	

PART NO.	DESCRIPTION.	Ø
SSPNGM1253B	Grooving machine	DN125-DN300
	For dn125-dn300 pipe	

STAINLESS STEEL RANGE



GROOVING MACHINE

PART NO.	DESCRIPTION.	Ø
SSPND11550	Manual pipe Deburrer(ridgid)	DN15-DN50



GROOVING MACHINE

PART NO.	DESCRIPTION.	Ø
SSPND653B	Rechargeable deburrer Includes 1 grinding wheel	DN65-DN300



GROOVING MACHINE

PART NO.	DESCRIPTION.	Ø
SSPND653B-W	Grinding wheel for d653b	FOR SS ONLY

15MM – 168MM SS316 L PRESS FITTINGS



316L STAINLESS STEEL PUSH-IN FITTING

Stainless steel fittings from pegler yorkshire make jointing easier, faster And more cost effective than other jointing methods - a fittings System which simply presses together in seconds to create a perfect Joint, every time.



SO MANY STAINLESS STEEL BENEFITS, AND SO MUCH CHOICE

- Safety: no naked flames.
- System does not need to be 'dry for effective jointing.
- No localized annealing from high-temperature working
- Perfectly clean internal bore - less finishing or cleaning required.
- Electrical continuity assured when the xpress jointing process is complete. Or flux residue - reduced risk of corrosion.
- Xpress fittings have a wide range of approvals including kitemark, wras And dvgw.
- Major savings in installation time and cost compared with traditional Jointing methods.
- Ideal for diverse applications such as domestic maintenance and Refurbishment, new build and large-scale public sector project

COUPLING



REDUCER



FEMALE ADAPTOR



FLANGE ADAPTOR



ELBOW



15MM – 168MM SS316 L PRESS FITTINGS



Stainless Steel fittings use the same O Ring technology to provide the best and widest range of heat free jointing. It is important to check compatibility between the O Ring and the fluid and the fluid in the system. The table below is a guide for the Contractor, installer and Specifier, and shows the compatibility of three O Ring materials with common fluid types and some gases.

EPDM – Ethylene Propylene Diene Monomer – This is the standard, BLACK O Ring that is used in stainless steel COPPER ranges. This material is also used for the Leak before Press O Rings used in Stainless steel CARBON and Xpress STAINLESS STEEL

HNBR – Hydrogenated Nitrile Rubber – This is the YELLOW O Ring that is only used in Stainless Steel GAS

FPM – Fluorocarbon Rubber – This is the GREEN O Ring that is only used in stainless steel Solar

Designation	Black	Yellow	Green
	EPDM Stainless Steel	HNBR Gas	FPM Solar
Maximum service temperature °C	180	100	230
Low service temperature °C	- 50	-20	-20
Water/Steam Resistance			
Water/Steam resistance <40°C	✓✓✓	✓✓✓	✓✓✓
Water/Steam resistance <80°C	✓✓✓	✓✓	✓✓✓
Water/Steam resistance <150°C	✓✓	X	*✓✓
Water/Steam resistance >150°C	✓	X	*✓✓

Designation	Black	Yellow	Green
	EPDM Stainless Steel	HNBR Gas	FPM Solar
Fluids Resistance			
Acid			
Acetic 10%	✓✓✓	✓	✓
Formic	✓✓✓	X	✓
Hydrochloric 20%	✓✓✓	✓	✓✓
Nitric 30%	✓✓✓	X	✓✓
Phosphoric 20%	✓✓✓	✓	✓✓✓
Sulphuric 30%	✓✓	X	✓✓
Alkalis			
Barium hydroxide	✓✓✓	✓✓	✓✓✓
Calcium hydroxide	✓✓✓	✓✓	✓✓✓
Sodium hydroxide	✓✓✓	✓✓	✓✓
Alcohols			
Butyl alcohol (Butanol)	✓✓	✓✓✓	✓✓✓
Ethyl alcohol (Ethanol)	✓✓✓	✓✓	✓
Methyl alcohol (Methanol)	✓✓✓	✓✓✓	X
Amines			
Ethylene diamine	✓✓✓	✓✓	X
Ammonia – cold gas	✓✓✓	✓✓✓	X
Ammonia – hot gas	✓✓	X	X
Chlorides			
Ammonium chloride	✓✓✓	✓✓✓	✓✓✓
Calcium chloride solution	✓✓✓	✓✓✓	✓✓✓
Magnesium chloride	✓✓✓	✓✓✓	✓✓✓
Zinc chloride	✓✓✓	✓✓✓	✓✓✓
Gases			
Butane	X	✓✓✓	✓✓✓
Carbon dioxide (dry)	✓✓	✓✓✓	✓✓✓
Chloride (wet)	✓	X	✓✓✓
Freon 12	✓✓	✓✓✓	✓✓
Freon 21	X	X	X
Freon 22	✓✓✓	X	X
Freon 134a	✓✓✓	•	X
Natural gas	X	✓✓✓	✓✓✓
Methane	X	✓✓✓	✓✓✓
Propane	X	✓✓✓	✓✓✓
Oils and Fuels			
ASTM No 1 oil	X	✓✓✓	✓✓✓
ASTM No 2 oil	X	✓✓✓	✓✓✓
ASTM No 3 oil	X	✓✓✓	✓✓✓
ASTM fuel A	X	✓✓✓	✓✓✓
ASTM fuel B	X	✓	✓✓✓
ASTM fuel C	X	✓	✓✓✓
Diesel oil	X	✓✓✓	✓✓✓
Diesel oil + RME (10%)	X	X	✓✓✓
Mineral oil (low aromatic)	X	✓✓✓	✓✓✓

Designation	Black	Yellow	Green
	EPDM Stainless Steel	HNBR Gas	FPM Solar
Oils and Fuels cont			
Hydraulic oils (petroleum base)	X	✓✓✓	✓✓✓
Lubricating oils	X	✓✓✓	✓✓✓
Paraffin	X	✓✓✓	✓✓✓
Petrol	X	✓✓✓	✓✓✓
Silicone oil/grease	✓✓✓	✓✓✓	✓✓✓
Transformer oils	X	✓✓✓	✓✓✓
Vegetable oils	✓	✓✓✓	✓✓✓
Solvents			
Acetone	✓✓✓	X	X
Benzene	X	X	✓✓✓
Carbon tetrachloride	X	✓	✓✓✓
Dimethyl formamide	✓✓	✓	X
Ethyl acetate	✓✓	X	X
Methyl ethyl ketone	✓✓✓	X	X
Tetrachloroethylene	X	X	✓✓✓
Toluene	X	X	✓✓✓
Turpentine	X	✓✓✓	✓✓✓
Xylene	X	X	✓✓
Miscellaneous			
Ethylene glycol	✓✓✓	✓✓✓	✓✓✓
Detergents	✓✓✓	✓✓✓	✓✓✓
Dioctyl phthalate	✓✓	X	X
Formaldehyde	✓✓✓	✓	X
Hydrogen peroxide (90%)	✓✓	X	✓✓
Phosphate esters	✓✓✓	X	✓
Potassium nitrate	✓✓✓	✓✓✓	✓✓✓

Key to Media Table	
✓✓✓	Excellent – Recommended
✓✓	Good – Minor to Moderate effects
✓	Fair – Moderate to severe effects
X	Poor – Not recommended
•	Insufficient data available
* Conditions Apply	Temperature or other limitation affecting polymer choice

These tables refer to room temperature tests. For other conditions and additional media advice please refer to Pegler Yorkshire for advice.

4MM-12MM PNEUMATIC PUSH IN FITTINGS



STRAIGHT CONNECTOR

PART NO.	TUBE OD
PM0404E	4
PM0405E	5
PM0406E	6
PM0408E	8
PM0410E	10
PM0412E	12



STEM ELBOW

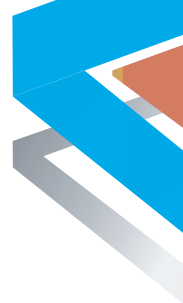
PART NO.	STEM OD	TUBE OD
PM220404E	4	4
PM220505E	5	5
PM220606E	6	6
PM220808E	8	8
PM221010E	10	10
PM221212E	12	12



BULKHEAD CONNECTOR

PART NO.	TUBE OD
PM1204E	4
PM1205E	5
PM1206E	6
PM1208E	8
PM1210E	10
PM1212E	12

4MM-12MM PNEUMATIC PUSH IN FITTINGS



EQUAL ELBOW



PART NO.	TUBE OD
PM0304E	4
PM0305E	5
PM0306E	6
PM0308E	8
PM0310E	10
PM0312E	12

EQUAL TEE



PART NO.	TUBE OD
PM0204E	4
PM0205E	5
PM0206E	6
PM0208E	8
PM0210E	10
PM0212E	12

REDUCER



PART NO.	STEM OD	TUBE OD
PM060504E	5	4
PM060604E	6	4
PM060605E	6	5
PM060804E	8	4
PM060805E	8	5
PM060806E	8	6
PM061006E	10	6
PM061008E	10	8
PM061208E	12	8
PM061210E	12	10

15MM-32MM JOHN GUEST COMPRESSED AIR FITTINGS

**APPLICATIONS: ALUMINIUM PIPE AND PLASTIC FITTINGS FROM MS TO 32MM:
COMPRESSED AIR/VACUUM/INERT GASES**

Push fit system of fitting and pipe which means a compressed Air system can be installed quickly and easily with much reduced Production down time. It is also easy to rearrange and extend a system.



ALUMINIUM MALE ADAPTOR

PART NO	PIPE OD
AL011514E	15 X 1/2"
AL012216E	22 X 3/4"
AL012818E	28 X 1"

EQUAL ELBOW

PART NO	PIPE OD
PM0312E	12
PM0315E	15
PM0318E	18
PM0322E	22
PM0328E	28
P-UG303B	32



SADDLE DROP

PART NO	PIPE OD ENDS	SIZE
PNSB2212	22	1/2" BSP
PNSB2812	28	1/2" BSP



15MM - 32MM JOHN GUEST COMPRESSED AIR FITTINGS



STRAIGHT CONNECTOR

PART NO	PIPE OD
PM0412E	12
PM0415E	15
PM0418E	18
PM0422E	22
PM0428E	28
P-UG403B	32



EQUAL TEE

PART NO	PIPE OD
PM0212E	12
PM0215E	15
PM0218E	18
PM0222E	22
PM0228E	28
P-UG203B	32



REDUCING TEE

PART NO	PIPE OD ENDS	TUBE OD BRANCH
PM3018AE	18	15
PM3022AE	22	15



END STOP

PART NO	PIPE OD
PM4615E	15
PM4622E	22

15MM - 32MM JOHN GUEST COMPRESSED AIR FITTINGS



STEM ADPTOR



PART NO	PIPE OD
PM051214E	12 X 1/2"
PM051514E	15 X 1/2"
PM051516E	15 X 3/4"
PM051814E	18 X 1/2"
PM052214E	22 X 1/2"
PM052216E	22 X 3/4"



ALLUMINIUM WALL BOX

PART NO	SIZE (MM)
JGWALLBOX	1/2
JGWALLBOX	3/4

ALLUMINIUM PIPE



PART NO	SIZE OD
AL-RM1513-3M	15X 3
AL-RM1816-3M	18X 3
AL-RM2220-3M	22X 3
AL-RM2826-4M	28X 4
AL-RM3229-5M	32X 5

15MM - 32MM JOHN GUEST COMPRESSED AIR FITTINGS



PORTING BLOCK

PART NO
JG-LWSK 1/2" X 1/2"-05 CONNECTION

REDUCER



PART NO	PIPE OD ENDS	TUBE OD BRANCH
PM061512	15	12
PM061815E	18	15
PM062215E	22	15
PM062218E	22	18
PM062815E	28	15
PM062822E	28	22

1/4" - 1/2" FOOD GRADE PUSH IN FITTINGS

John Guest offers a wide range of push-fit connectors, tube and other fluid control products for drinks dispense and pure water applications. The world's first food quality push-fit fitting, the John Guest range is now over 800 items strong and provides the quickest and most effective of installations with the quality assurance you would expect. Pushing the tube into the fitting is all that is needed to produce an instant but permanent leakproof connection. The fittings are just as easy to disconnect and re-use without the need for replacement parts. Our Beverage and Drinks Dispense products are produced in FDA compliant materials making them especially suitable for potable liquids.

Brass Fittings for Beverage Dispense



CI & CM Acetal Fittings



Superseal Fittings



LLDPE Tubing



Accessories



Polypropylene Fittings



PI & PM Acetal Fittings



Polar Clean



Metric to Imperial Adaptors



Valves



15MM- 28MM FOOD GRADE PEX PLUMBING FITTINGS AND PIPES



PEX BARRIER PIPE

PART NO	SIZE (MM x M)
15BPEX-20 X 3L	15X 3
22BPEX-20 X 3L	22X 3
28BPEX-10 X 3L	28X 3



REDUCING STRAIGHT CONNECTOR

PART NO	SIZE (MM)
PEM201510W	15 X 10
PEM202215W	22 X 15



EQUAL ELBOW

PART NO	SIZE (MM)
PEM0310W	10
PEM0315W	15
PEM0322W	22
PEM0328W	28



EQUAL TEE

PART NO	SIZE (MM)
PEM0210W	10
PEM0215W	15
PEM0222W	22
PEM0228W	28

15MM- 28MM FOOD GRADE PEX PLUMBING FITTINGS AND PIPES



FEMALE COUPLER TAP CONNECTOR



PART NO	SIZE (MM X BSP)
PSE3201W	15 X 1/2"
PSE3203W	15 X 3/4"
PSE3202W	22 X 3/4"

SUPER SEAL PIPE INSERT



PART NO	SIZE (MM)
STS10	10
STS15	15
ST522	22
STS28	28

PLUG



PART NO	SIZE (MM)
PL10	10
PL15	15
PL22	22
PL28	28

EQUAL STRAIGHT CONNECTOR



PART NO	SIZE (MM)
	10
	15
	22
	28

15MM- 28MM FOOD GRADE PEX PLUMBING FITTINGS AND PIPES



BENT TAP CONNECTOR



PART NO	SIZE (MM X M)
PEMBTC11514	15 X 12"

STEM ELBOW



PART NO	SIZE (MM)
PEM221010W	10
PEM221515W	15
PEM222222W	22

REDUCING TEE



PART NO	SIZE (MM)
PEM3015BW	15X10X10
PEM3015AW	15X15X10
PEM3022CW	15X15X22
PEM3022BW	22X15X15
PEM3022DW	22X15X22
PEM30221AW	22X22X10
PEM3022AW	22X22X15
PEM3028BW	28X22X22
PEM3028AW	28X28X22
PEM3028DW	28X22X28

15MM- 28MM FOOD GRADE PEX PLUMBING FITTINGS AND PIPES



REDUCER



PART NO	SIZE (MM x BSP)
PEM061510W	15X10
PEM062215W	22X15
PEM062815W	28X15
PEM062822W	28X22

END STOP



PART NO	SIZE (MM)
PSE4610W	10
PSE4615W	15
PSE4622W	22

PIPE CLIP



PART NO	SIZE (MM)
PC15W	15
PC22W	22
PC28W	28

BRASS MALE ADAPTOR



PART NO	SIZE (MM)
MW011504	15MM X 1/2"
MW012206	22MM X 3/4"
MW012808	28MM X 1"

MS DOUBLE NIPPLE



PART NO.	SIZE
P-1212	1/2" X 1/2"
P-3412	3/4" X 1/2"
P-3434	3/4" X 3/4"
P-1112	1" X 1/2"
P-1134	1" X 3/4"
P-1111	1" X 1"
P-11412	1.1/4" X 1/2"
P-11434	1.1/4" X 3/4"
P-11411	1.1/4" X 1"
P-114114	1.1/4" X 1.1/4"
P-11212	1.1/2" X 1/2"
P-11234	1.1/2" X 3/4"
P-11211	1.1/2" X 1"
P-112114	1.1/2" X 1.1/4"
P-112112	1.1/2" X 1.1/2"
P-2212	2" X 1/2"
P-2234	2" X 3/4"
P-2211	2" X 1"
P-22114	2" X 1.1/4"
P-22112	2" X 1.1/2"
P-2222	2" X 2"
P-212114	2.1/2" X 1.1/4"
P-212112	2.1/2" X 1.1/2"
P-21222	2.1/2" X 2"
P-212212	2.1/2" X 2.1/2"
P-33112	3" X 1.1/2"
P-3322	3" X 2"
P-33212	3" X 2.1/2"
P-3333	3" X 3"

MALE FEMALE BUSHING



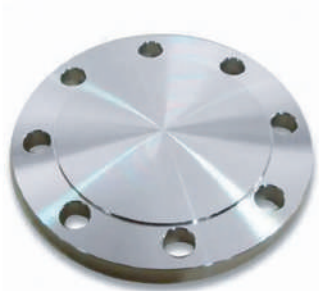
PART NO.	SIZE
P-3412MF	3/4" X 1/2"
P-1112MF	1" X 1/2"
P-1134MF	1" X 3/4"
P-11434MF	1.1/4" X 3/4"
P-11411MF	1.1/4" X 1"
P-11211MF	1.1/2"x1"
P-112114MF	1.1/2"x1.1/4"
P-2211MF	2"x1"
P-22114MF	2"x1.1/4"
P-22112MF	2"x1.1/2"
P-33112MF	3"x1.1/2"
P-3322MF	3"x2"

NON RETURN VALVE



PART NO.	SIZE
P-12NRV	1/2"
P-34NRV	3/4"
P-11NRV	1"
P-114NRV	1.1/4"
P-112NRV	1.1/2"
P-22NRV	2"
P-212NRV	2.1/2"
P-33NRV	3"
P-44NRV	4"

BLIND FLANGE



PART NO.	SIZE
PNBFLG63	2.1/2"
PNBFLG80	3"
PNBFLG100	4"
PNBFLG150	6"



PRESSURE REDUCING VALVE

PART NO.	SIZE
P-12PRV	1/2"
P-34PRV	3/4"
P-11PRV	1"
P-114PRV	1.1/4"
P-112PRV	1.1/2"
P-22PRV	2"
P-212PRV	2.1/2"
P-33PRV	3"
P-44PRV	4"



THREADED FLANGE

PART NO.	SIZE
PNTFLG15	1/2"
PNTFLG20	3/4"
PNTFLG25	1"
PNTFLG32	1.1/4"
PNTFLG40	1.1/2"
PNTFLG50	2"
PNTFLG63	2.1/2"
PNTFLG80	3"



L' METAL SUPPORT BRACKET

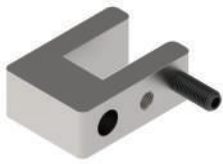
PART NO.	SIZE
P-LMSB6-6	6" X 6"
P-LMSB6-8	6" X 8"
P-LMSB8-8	8" X 8"
P-LMSB8-10	8" X 10"
P-LMSB10-10	10" X 10"
P-LMSB8-12	8" X 12"
P-LMSB10-12	10" X 12"
P-LMSB12-12	12" X 12"

L' METAL SUPPORT BRACKET



PART NO.	SIZE
P-LMSB6-4	6" X 4"
P-LMSB8-4	8" X 4"
P-LMSB10-4	10" X 4"
P-LMSB12-4	12" X 4"

GIRDER CLAMP



PART NO.	SIZE
P-GCMP08	40 X 40 X 20
P-GCMP10	50 X 50 X 25

TIE ROD



PART NO.	SIZE
P-TIEROD8X1	8mm X 1mtr
P-TIEROD8X2	8MM X 2mtr
P-TIEROD8X3	8mm X 3mtr
P-TIEROD10X1	10mm X 1mtr
P-TIEROD10X2	10mm X 2mtr
P-TIEROD10X3	10mm X 3mtr

RUBBER HOSE PIPE



PART NO.	SIZE
P-1201HOSE PIPE	1/2" X 01mtr
P-1202HOSE PIPE	1/2" X 02mtr
P-3401HOSE PIPE	3/4" X 01mtr
P-3402HOSE PIPE	3/4" X 02mtr
P-1101HOSE PIPE	1" X 01mtr
P-1102HOSE PIPE	1" X 02mtr
P-11401HOSE PIPE	1.1/4" X 01mtr
P-11402HOSE PIPE	1.1/4" X 02mtr
P-11201HOSE PIPE	1.1/2" X 01mtr
P-11202HOSE PIPE	1.1/2" X 02mtr
P-2201HOSE PIPE	2" X 01mtr
P-2202HOSE PIPE	2" X 02mtr

BOLT



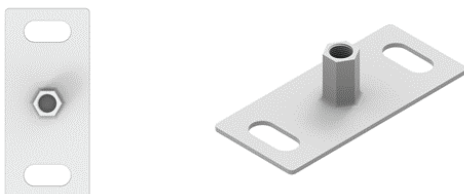
PART NO.	SIZE
P-801BOLT	8MM X 1"
P-802BOLT	8MM X 2"
P-901BOLT	8MM X 1"
P-902BOLT	8MM X 2"
P-903BOLT	8MM X 3"
P-1001BOLT	10MM X 1"
P-1002BOLT	10MM X 2"
P-1003BOLT	10MM X 3"
P-1201BOLT	12MM X 1"
P-1202BOLT	12MM X 2"
P-1203BOLT	12MM X 3"
P-1604BOLT	16MM X 4"
P-1605BOLT	16MM X 5"
P-1606BOLT	16MM X 6"
P-1607BOLT	16MM X 7"
P-1608BOLT	16MM X 8"

SELF SCREW



PART NO.	SIZE
P-0401 SELF SCREW	4MM X 1"

THREADED BASE PLATE



PART NO.	SIZE
P-08 THRD BASE PLATE	8MM
P-10 THRD BASE PLATE	10MM
P-12 THRD BASE PLATE	12MM

LOCKTITE



PART NO.	SIZE
P-242 LOCKTITE	LOCKTITE 242



BASE PLATE

PART NO.	SIZE
P-BASE PLATE	BASE PLATE



UCLAMPS FOR CLIPS

PART NO.	SIZE
P-UCLAMPS FOR CLIPS	UCLAMPS FOR CLIPS



UCLAMPS

PART NO.	SIZE
P-UCLAMPS FOR PORTING BLOCKS	UCLAMPS FOR PORTING BLOCKS
P-UCLAMPS FOR PURGE B/V	UCLAMPS FOR PURGE B/V



SLOTTED CHANNELS

PART NO.	SIZE
P-4 SLOTTED CHANNELS	4 FEET



STRAIGHT ANGLE

PART NO.	SIZE
P-2 STRAIGHT ANGLE	2 FEET
P-4 STRAIGHT ANGLE	4 FEET

ACCESSORIES



PRESSURE GAUGE

PART NO.	SIZE
P-4PRESSURE GAUGE	4" DIAL X 1/2" BSP THREAD
P-6PRESSURE GAUGE	6" DIAL X 1/2" BSP THREAD
P-8PRESSURE GAUGE	8" DIAL X 1/2" BSP THREAD



PRESSURE GAUGE WITH GLYCERINE FILLED

PART NO.	SIZE
P-4PGWGF	4" DIAL X 1/2" BSP THREAD
P-6PGWGF	6" DIAL X 1/2" BSP THREAD
P-8PGWGF	8" DIAL X 1/2" BSP THREAD

NUT



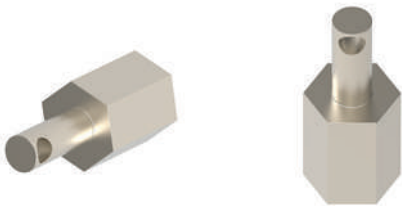
PART NO.	SIZE
P-0808NUT	8MM
P-1010NUT	10MM
P-1212NUT	12MM
P-1616NUT	16MM

WASHER



PART NO.	SIZE
P-0808WASHER	8MM
P-1010WASHER	10MM
P-1212WASHER	12MM
P-1616WASHER	16MM

PIN ADAPTOR



PART NO.	SIZE
P-08PIN ADAPTOR	8MM

SCREW



PART NO.	SIZE
P-0601SCREW	6MM X 1"

CLIENT LIST



CLIENT LIST



CLIENT LIST



CLIENT LIST



WARNING – INSTALLATION BY SELF OR DESIGNATED WORKMAN AT SITE



The failure or improper selection or utilization of the products described herein or related item may potentially result in severe consequences, including but not limited to, loss of life, personal injury, and property damage. This document, in conjunction with additional informational resources originating from Luthra Pneumsys, its subsidiary entities, and duly authorized distributors, serves to present product and system options for further exploration, targeting individuals possessing requisite technical expertise.

It is incumbent upon the user, through a meticulous process of analysis and testing, to assume full responsibility for the ultimate selection of both the system and its constituent components. This responsibility extends to ensuring that all performance, durability, maintenance, safety, and warning criteria pertinent to the given application are scrupulously adhered to. The user must comprehensively scrutinize all facets of the application, adhere to pertinent industry standards, and meticulously adhere to the guidance provided in the current product catalog, as well as any supplementary materials disseminated by Luthra Pneumsys or its subsidiary entities or duly authorized distributors.

To the extent that Luthra Pneumsys or its subsidiary entities or duly authorized distributors furnish component or system options predicated upon data or specifications provided by the user, it falls to the user to affirm that said data and specifications are not only suitable but also adequately robust for the entirety of contemplated applications and reasonably foreseeable uses encompassing the components or systems in question.

CONTACT US

MUMBAI

C/O Luthra Hydro Pneumatic Industries Unit No-2, Luthra Industrial premises
Safed Pool, Andheri (E), Mumbai-400072

PUNE

Heuu Industrial Space, Shop No. 234, 2nd Floor, Plot no.C -19, DI Block, MIDC,
Behind Thermax, Chinchwad, Pune-411019

COIMBATORE

Old No. 8A, Parameswaran Pillai Layout, Papanackalpalayam, Coimbatore,
Tamil Nadu 641037

DELHI

G-3, Pkt- 7, Plot No -6, Sec-12, Vardhman Plaza, Near Dwarka Sec-12 Metro
Station, New Delhi-110075

CHENNAI

Pneumsys Advance Energy Solutions - Modular Aluminum Piping No-3, G1
Ground Floor Jasmine Court Manickam Pillai Nagar, Lakshmipuram road,
Poonamallee Chennai - 641037

BENGALURU

1108/L, 1st Fl, 9th 'C' main, Behind Hampinagar Bus Stand, R.P.C Layout, Vijay
Nagar Bengaluru - 560040

CONTACT INFORMATION

 +91 85912 01473

 Marketing@luthrapneumsys.com

 www.pneumsysenergy.com

 Vasai East, Mumbai, Maharashtra

“

It's important to create a culture of innovation, one that values and rewards risk.

”